

# Just to let you know...

## Words of the Week

calf  
calves  
elf  
elves  
loaf  
loaves  
wolf  
wolves

carpel  
stamen  
stigma  
style  
ovary  
anther  
filament  
pollen  
fertilize



In group maths this week we have continued working out multi-step word problems.

In class maths the children have been making and studying data diagrams (graphs) and trying to interpret the given data.

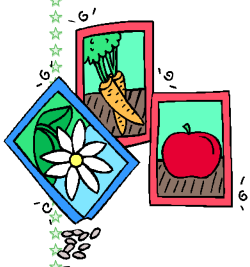
Have a look at [moonmaths.com](http://moonmaths.com) to help with practising time tables.

Times tables tests continue to be on Thursdays and spellings on Fridays. Please help your child practise their times tables and spellings.

Thank you for helping out at home.

## SEEDS and SEED PACKETS

Please continue to send in any spare seeds that you may have which we could use for our *Once-ler* topic.



## *The Once-ler*

This week in English we have decoded a message from the *Once-ler* and we were given a magical seed which we planted.

We also compared and contrasted different seed packets and have written instructions for our own magical seed.